



99 Yelland Road



99 Yelland Road

Fremington, Barnstaple, Devon, EX31 3DT

Between Fremington & Yelland, close to the Tarka Trail, local amenities, open countryside and Instow beach

A substantial detached chalet style residence offering generous, well presented accommodation, suitable for a variety of uses, with large garden, just a 5 minute drive from Instow beach

- Hall, Living Room, Conservatory
- 7 En Suite Bedrooms, Bathroom
- A lift connects both floors. Gas C.H.
- Suitable for a variety of uses
- Council Tax Band E
- Cloakroom, Kitchen, Utility Room
- 5 Beds on ground, 2 on first with Balconies
- Extensive Parking. 0.65 Acre gardens
- 3257 sq ft overall . No upward chain
- Freehold

Guide Price £749,500

SITUATION & AMENITIES

The village of Fremington is a very popular area and benefits from a good selection of amenities, which include primary school, church, public houses, Chinese restaurant, fish & chip shop, small supermarket/Post Office, hairdressers, medical centre, pharmacy, village hall, sports field and regular bus services connecting with Bideford and Barnstaple (there are bus stops in both directions very close to the property). Nearby Fremington Quay has a favoured café which serves food, taking in the view of water towards Saunton Sands and also located on the Tarka Trail – a former railway line route which runs from Braunton to Meeth, covering about 30 miles as a series of connected footpaths, bridleways and cycle paths which pass through some of North Devon's most beautiful scenery. The property is located about 3 miles away from the highly desirable coastal village of Instow with its popular sandy beach and North Devon Yacht Club. Amenities at Instow also include local shops, delicatessen, Post Office, café, hotel, primary school and a variety of pubs and restaurants. There is also a good range of transport opportunities via regular bus routes and the ferry to Appledore across the estuary. The port and market town of Bideford is about 3.5 miles and offers a wider range of amenities, along with several primary schools, a secondary school and the reputable private school of Kingsley. The sandy beach of Westward Ho! is a further few miles away and backs on the Northam Burrows Country Park and Royal Devon Golf Club (the oldest in the country). There is also access to the South West Coastal Footpath which offers superb coastal walks and stunning vistas of the rugged coastline. The regional centre of Barnstaple is about 3 miles in the opposite direction and offers all of the area's main business, commercial, leisure and shopping venues, and primary and secondary schooling/colleges. Further afield there are more reputable private schools such as West Buckland (about 25 minutes by car) with local pick-up points. From Barnstaple there is access to the North Devon Link Road (A361) which leads on in around 45 minutes to Jct.27 of the M5 Motorway. There is also access there to Tiverton Parkway, where London Paddington can be reached in just over 2 hours. North Devon's famous surfing beaches at Croyde, Putsborough, Saunton (also with Championship Golf Course) and Woolacombe are all within around 30 minutes by car.



DESCRIPTION

We understand that the original core of the property possibly dates to the 1930s, but has been the subject of major extensions and remodelling over subsequent years. The house presents elevations of painted render with UPVC double glazed windows, UPVC cladding in parts for ease of maintenance, all beneath a clay tiled roof. In more recent years, the property was operated as a residential care home – hence the number of ensuite bedrooms. Internally, the accommodation is tastefully modernised, well-presented, generous and versatile. Looking to future uses, No.99 is considered ideal as a large single family residence, or for dual occupation purposes by parts of the same family. It would make a perfect B&B or AirB’nB establishment or has potential to produce a very healthy income as a holiday let, given the amount of bedrooms and its proximity to the coast. Alternatively, there may be potential for other uses such as foster home, or a commercial use such as GP surgery, dentist or veterinary practice, etc, subject to any necessary change of use. The accommodation could potentially be configured so that the First Floor is entirely private, with the Ground Floor used for Commercial purposes. There is a modern lift linking the Ground and First Floors, which also futureproofs for anyone who cannot manage stairs. The property is complemented by extensive parking at the front, side and rear, as well as level gardens which back on to woodland.

ACCOMMODATION

GROUND FLOOR

Front door to ENTRANCE HALL 2 recesses understairs, lift to First Floor. LIVING ROOM with part-vaulted ceiling. Double and single doors leading through to CONSERVATORY – in turn with two sets of French doors to GARDEN. KITCHEN extensive range of modern units in wood-effect topped by granite-effect work surfaces incorporating 1 ½ bowl stainless steel sink unit, integral Beko dishwasher, Bosch double electric oven, integrated fridge, 4-ring gas hob, extractor hood. Matching galley UTILITY ROOM integrate freezer, space and plumbing for washing machine, space for tumble dryer, door to GARDEN, boiler room housing Worcester gas-fired boiler for central heating and domestic hot water, hot water cylinder/shelving. From the LIVING ROOM there is a LOBBY with LINEN CUPBOARD and CLOAKROOM and access to BEDROOM 3, with French doors to GARDEN and ENSUITE WET ROOM. Returning to the ENTRANCE HALL, the first BEDROOM to the right – BEDROOM 4 double wardrobe, ENSUITE WET ROOM. Above this BEDROOM 5 with ENSUITE WET ROOM and French doors to OUTSIDE. Adjacent BATHROOM approached from the HALL. BEDROOM 6 is at the front of the property, also with ENSUITE WET ROOM. BEDROOM 7 is opposite, with ENSUITE WET ROOM.

FIRST FLOOR

LANDING. Access to eaves storage space and roof. BEDROOM 1 French doors to BALCONY, WET ROOM. BEDROOM 2 French doors to BALCONY, double and single built-in wardrobes, ENSUITE WET ROOM.

OUTSIDE

To the front there is an extensive brick paved driveway providing ample parking and turning space, and the FRONT GARDEN is wall enclosed. In addition there is a side driveway granting access to the rear of the property and offering further parking. Immediately adjacent to the rear is a temporary dog enclosure. The large REAR GARDEN is predominantly laid to sweeping lawns, bounded by mature well-established borders. There is a STORAGE SHED and at the end of the garden, an area of woodland which in turn backs on to a wooded area.

SERVICES

All mains services connected. Gas central heating.

DIRECTIONS

W3W///fiown.solves.endlessly



IMPORTANT: Stags gives notice that: 1. These particulars are a general guide to the description of the property and are not to be relied upon for any purpose. 2. These particulars do not constitute part of an offer or contract. 3. We have not carried out a structural survey and the services, appliances and fittings have not been tested or assessed. Purchasers must satisfy themselves. 4. All photographs, measurements, floorplans and distances referred to are given as a guide only. 5. It should not be assumed that the property has all necessary planning, building regulation or other consents. 6. Whilst we have tried to describe the property as accurately as possible, if there is anything you have particular concerns over or sensitivities to, or would like further information about, please ask prior to arranging a viewing.

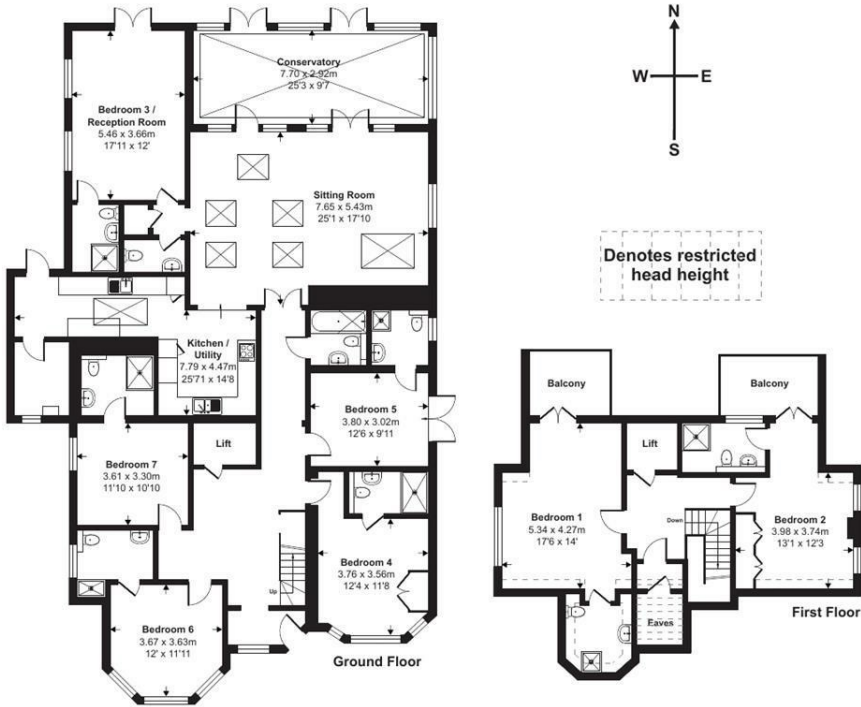


Energy Efficiency Rating		
	Current	Potential
Very energy efficient - lower running costs		
(92 plus) A		82
(81-91) B		
(69-80) C		69
(55-68) D		
(39-54) E		
(21-38) F		
(1-20) G		
Not energy efficient - higher running costs		
England & Wales		EU Directive 2002/91/EC

30 Boutport Street, Barnstaple,
Devon, EX31 1RP

barnstaple@stags.co.uk
01271 322833

Approximate Area = 3167 sq ft / 294.2 sq m
Limited Use Area(s) = 90 sq ft / 8.3 sq m
Total = 3257 sq ft / 302.5 sq m
For identification only - Not to scale



Floor plan produced in accordance with RICS Property Measurement 2nd Edition, Incorporating International Property Measurement Standards (IPMS2 Residential). ©nichecom 2025. Produced for Stags. REF: 1363662